



Teralux L1 (WZ) User Manual

0/1-10V to Zigbee Converter

CE RoHS  RED LVD



Teralux Office

Komp. Ruko Harmoni Mas, Jl. Jemb. Dua Raya
No.15 blok A, RT.1/RW.3, Pejagalan, Penjaringan,
North Jakarta City, Jakarta 14450

Teralux L1 (WZ) 0/1 to Zigbee Converter

ZigBee + RF 0/1-10V Push Dimmer provides 0-100% smooth dimming for one channel. It supports Tuya APP, Philips HUE (via bridge), and Voice control (Amazon ECHO/TmallGenie). The device can be easily mounted in a standard wall box and is compatible with external push switches and RF remotes. It can also function as a ZigBee RF converter for synchronous control of other RF lighting.

Features

ZigBee + RF + AC push 0/1-10V dimmer, 1 channel output.

Output 1 channel 0/1-10V signal, connect with 0/1-10V dimmable driver

Tuya APP cloud control, support on/off, brightness adjust, delay turn on/off light, timer run, scene function.

Philips HUE APP control by connect with Philips HUE bridge.

\Voice control, support amazon ECHO and TmallGenie smart speaker.

Light on/off fade time 3s selectable.

0-10V or 1-10V output selectable by DIP switch.

256 levels 0-100% dimming smoothly without any flash

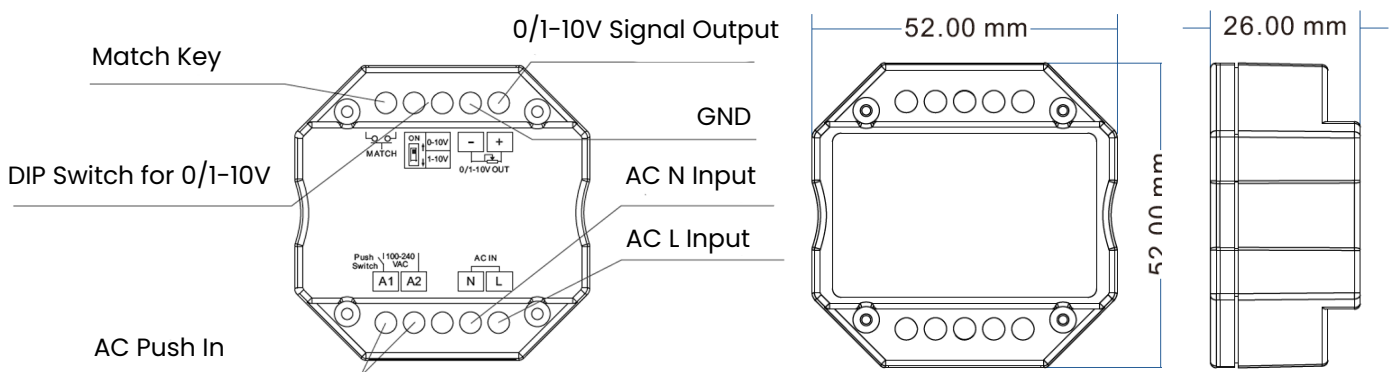
Compatibility with RF 2.4G single zone or multiple zone dimming remote control..

Each L1(WZ) controller can also work as ZigBee-RF converter, then use Tuya APP to control one or more RF dimming LED controller or driver synchronously.

Connect with external push switch to achieve on/off and 0-100% dimming function.

Easy to be placed in standard wall junction box behind a push switch


Mechanical Structure



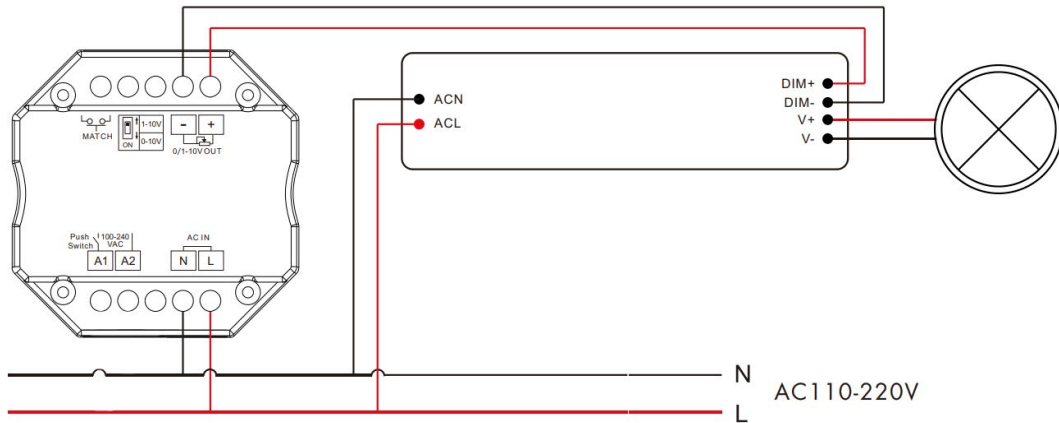
Technical Parameter

0/1 to Zigbee Converter

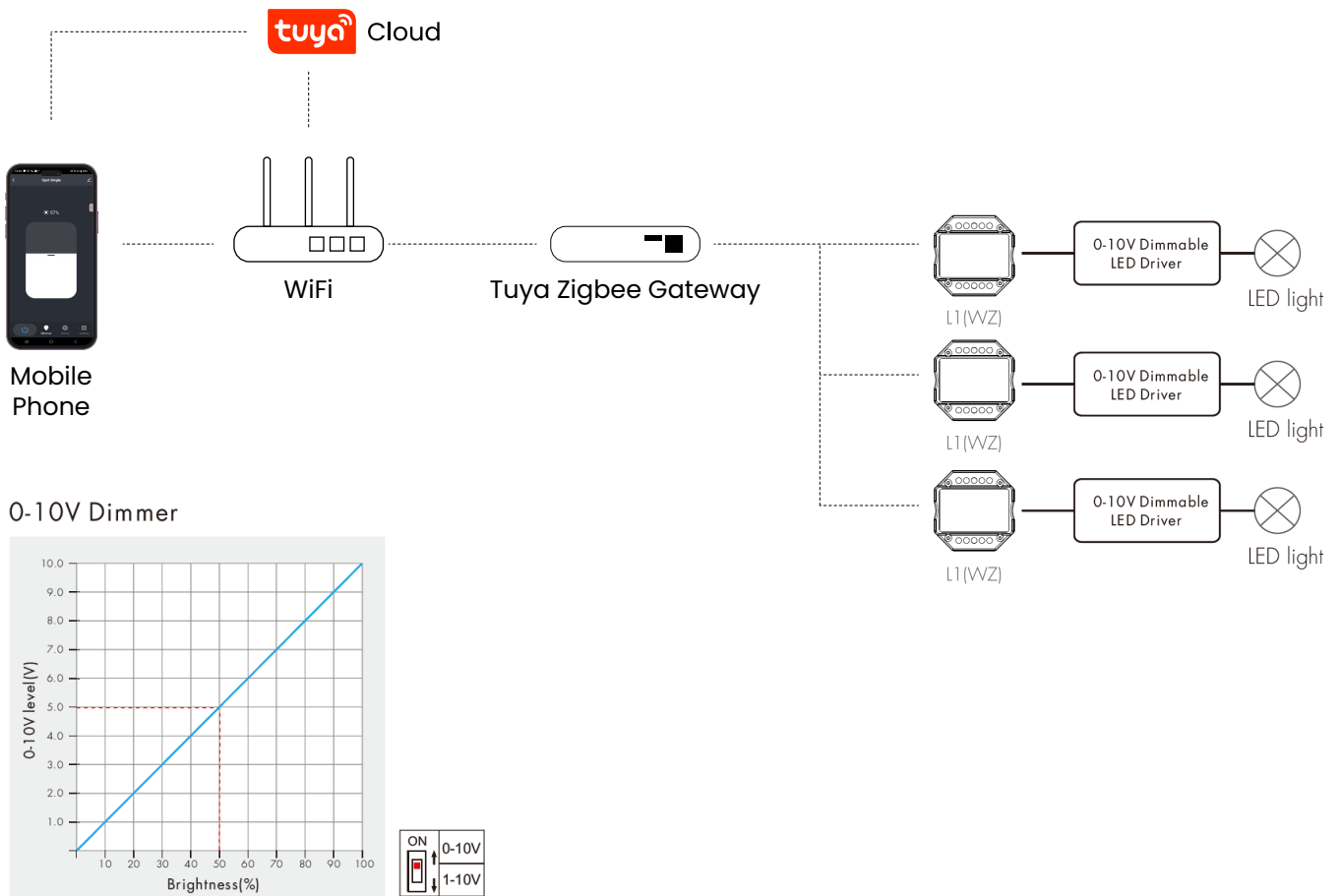
Engineered for modern smart lighting, this converter delivers smooth, accurate brightness adjustment with dependable efficiency and compatibility with Zigbee systems.

Category	Item	Specification
Input and Output	Input voltage	10–42VDC
	Output signal	2×(150–450)mA
Safety and EMC	EMC standard (EMC)	ETSI EN 301 489-1 V2.2.3
		ETSI EN 301 489-17 V3.2.4
	Safety standard (LVD)	EN 62368-1:2020 + A11:2020
	Radio Equipment (RED)	ETSI EN 300 328 V2.2.2
	Certification	CE RoHS  RED LVD
Dimming Data	Input signal	Tuya APP + RF + Push Dim
	RF Control distance	256 levels
	Dimming level	0–100%
	Dimming range	0.35A Max.
Environment	Operation temperature	Ta: -30°C ~ +55°C
	Case temperature (Max.)	Tc: +65°C
	IP rating	IP20

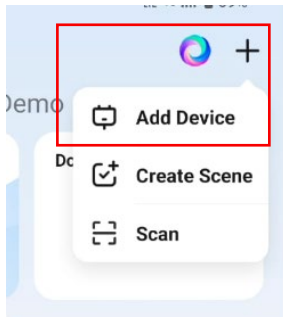
System Diagram



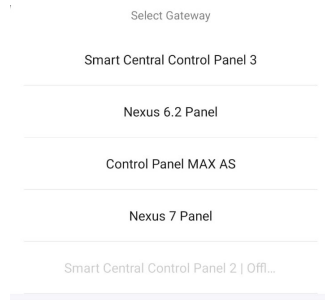
System Wiring



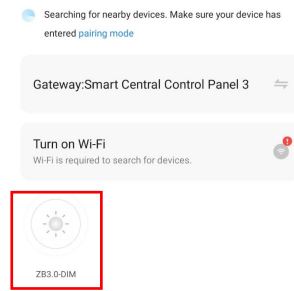
Tuya Smart APP Network Connection



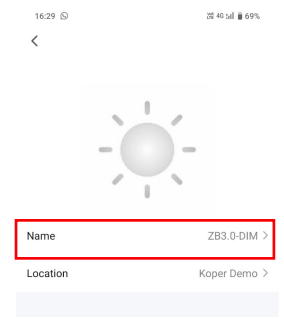
Add new device via Tuya App



Select nearby gateway

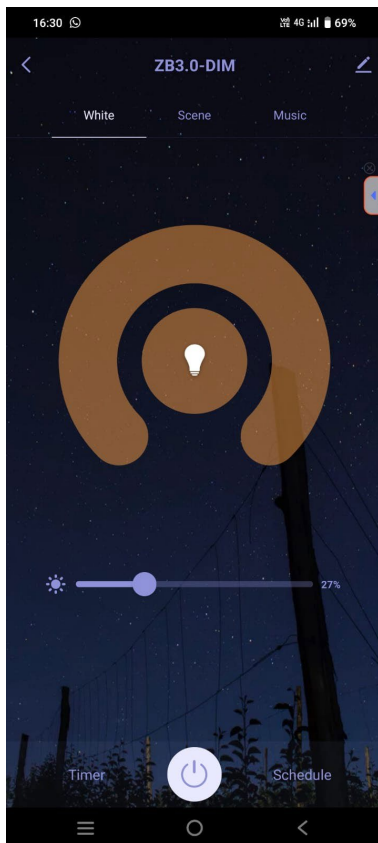


Detected device will appear in the list



Rename for easy recognition

App Interface





Teralux Office

Komp. Ruko Harmoni Mas, Jl. Jemb. Dua Raya
No.15 blok A, RT.1/RW.3, Pejagalan, Penjaringan,
North Jakarta City, Jakarta 14450

teraluxliving.com