

Teralux **Smart Video Doorbell** **POE User Manual**



Teralux Office

Komp. Ruko Harmoni Mas, Jl. Jemb. Dua Raya
No.15 blok A, RT.1/RW.3, Pejagalan, Penjaringan,
North Jakarta City, Jakarta 14450

Teralux Smart Video Doorbell POE

The TERALUX Smart Video Doorbell delivers enhanced entryway security through high-definition imaging, intelligent motion detection, and seamless smart home integration. Designed for reliable outdoor performance, this device provides real-time awareness and convenient remote access for both residential and commercial environments.

Features

2MP HD video quality with H.265/H.264 encoding for efficient and clear image transmission.

PIR motion detection for accurate human presence sensing

Full-duplex two-way audio for natural, real-time communication.

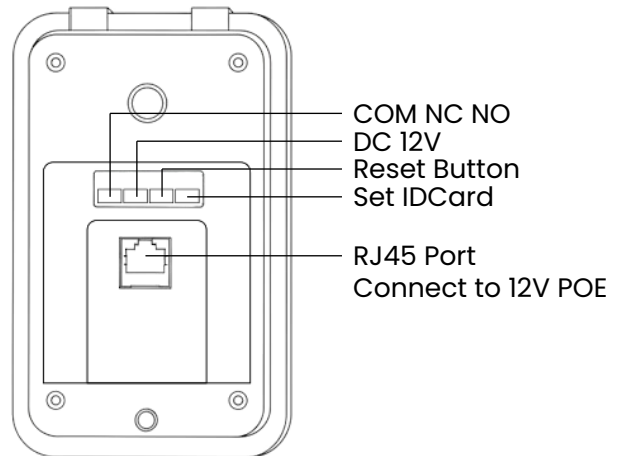
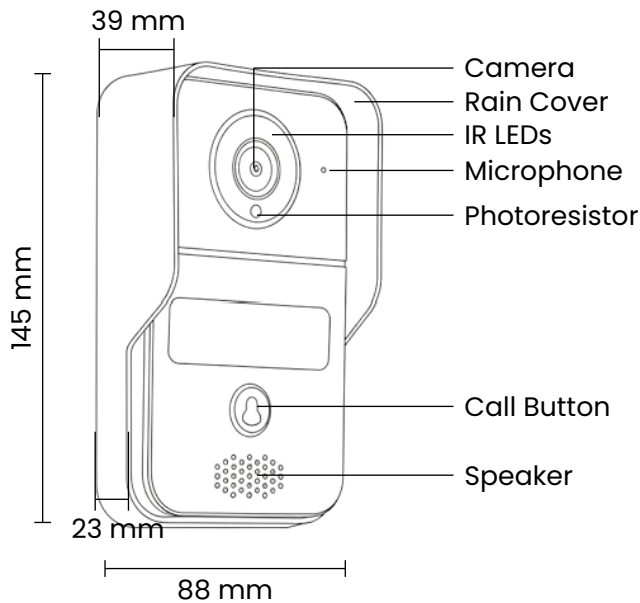
Smart alerts and automatic recording triggered by motion or doorbell press.

Remote unlocking via smartphone, control panel, or compatible ID card.

Night vision with IR-cut filter and enhanced low-light performance.

Voice assistant support for Amazon Alexa and Google Assistant.

Product Diagram



Technical Parameter

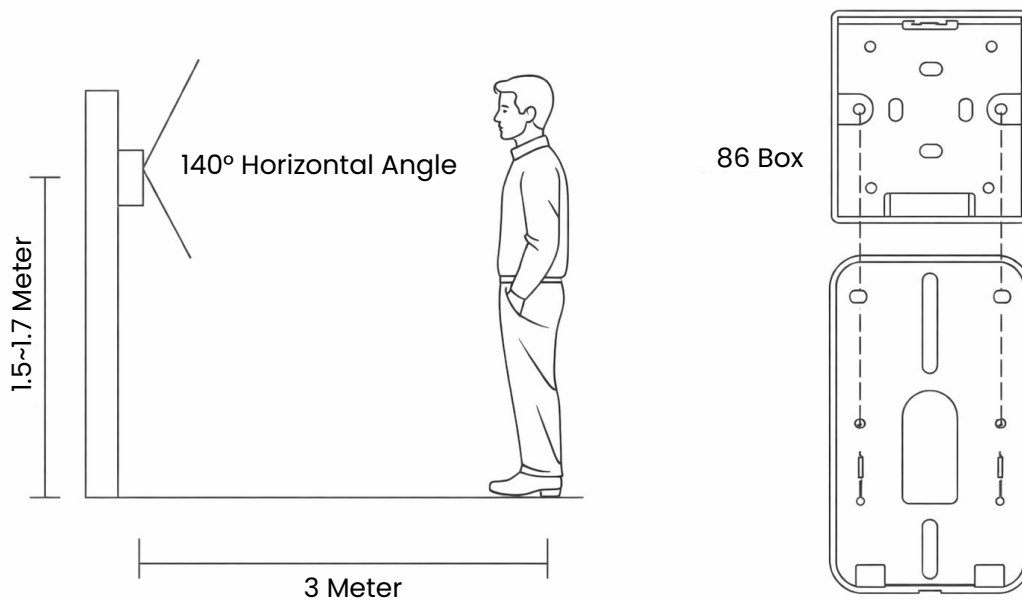
Parameter

Specification

Weatherproof Rating	IP65
Viewing Angle	Nearly full panoramic coverage
Night Vision	Full-color night mode, IR range up to 50 m
Audio	Two-way audio with integrated mic & speaker
Alarm System	Built-in siren, external I/O alarm supported
Video Compression	H.265 high-efficiency codec
Material	IP65 outdoor waterproof
Power Supply	AC/DC adapter as per configuration

Installation Diagram

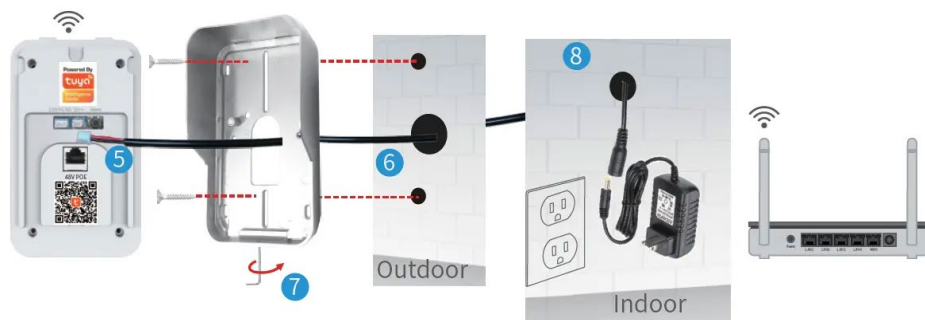
The doorbell is installed at a height of 1.5~1.7 meters, try to avoid the sunshine and rain, Using 2 screws or tape fixed the doorbell on the wall, wooden board, door, It can also be installed on the 86 box.



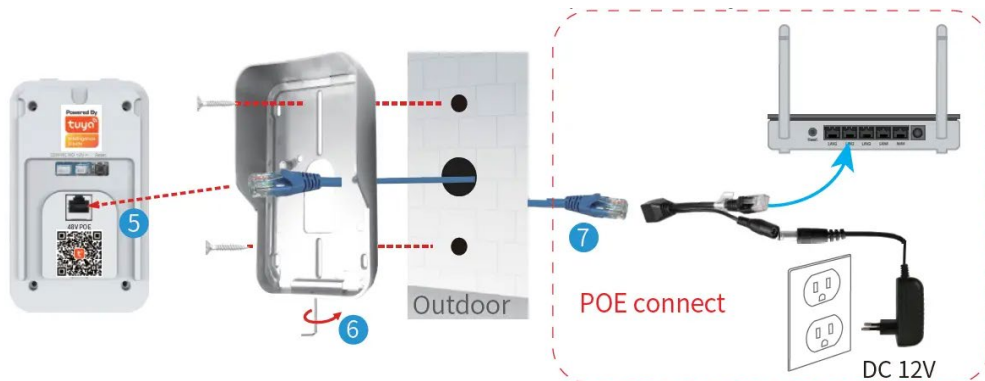
Use the drill bit to drill three holes. One hole is large enough to pass through the LAN cable, use anchors if you install video doorbell on brick or concrete.



To begin installation, remove the screws from the rain cover and separate the cover from the doorbell. Insert the TF card, then reattach and secure the rain cover using two screws. For Option 1, connect the doorbell to WiFi and a 12V power supply, ensuring the WiFi signal is strong at the installation location. Next, plug the DC cable into the power socket and feed the cable through the wall opening. Attach the rain cover back onto the host unit and tighten the bottom screws. Finally, connect the 12V power supply to the female end of the DC cable to complete the setup.

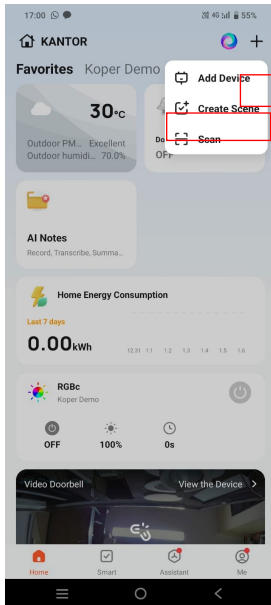


Option 2 (recommended): The network cable is connected to a standard 12V POE switch, The length of the network cable is less than 100 meters Connect the network cable to the network port of the doorbell Plug the rain cover on the doorbell and fix the bottom screws Connect the doorbell via LAN Cable at RJ45 port to POE injector and into Router.

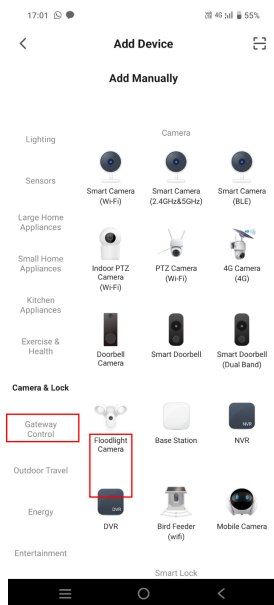


Pairing Instruction

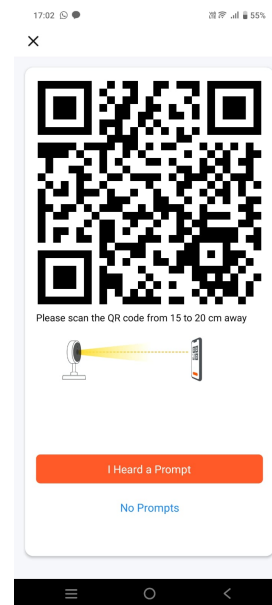
Make sure the indicator is flashing quickly or a prompt tone is heard click "Next". 5. scan the QR code from 15–20cm away as shown, hold the phone steady without shaking about 5 seconds, the camera will scan successfully. 6. It may take 5–60 seconds for the APP to search for the device on the Internet, and then wait for the connection to complete.



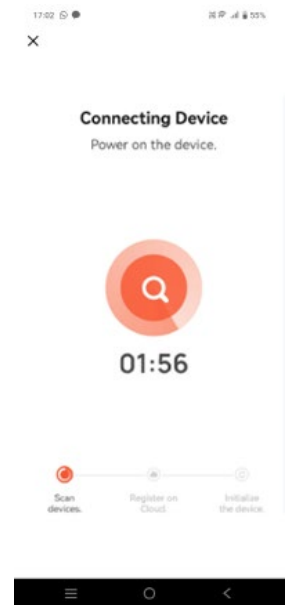
Add New Device



Select Device Type



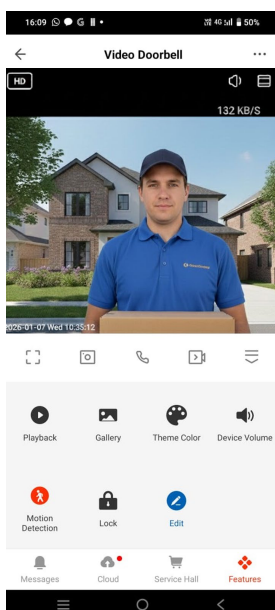
Point The QR to The Device



Pairing on Progress

Device Function

Click on the device to enter the liveing screen, You can take photos, talk, video, unlock, playback(TF Card), and view albums.Click the button in the upper right corner to enter the setting interface.





Teralux Office

Komp. Ruko Harmoni Mas, Jl. Jemb. Dua Raya
No.15 blok A, RT.1/RW.3, Pejagalan, Penjaringan,
North Jakarta City, Jakarta 14450

teraluxliving.com